

SAN MATEO COUNTY FAIR

HEALTH & SAFETY POLICY

We're excited to welcome you back at the Fair!

Your **safety** is our #1 priority.

Kindly follow the safety procedures we've implemented to **#StopTheSpread**.

Thank you!

PREVENTION MEASURES



- All vendors, performers, employees, volunteers, and guests will be required to answer three health questions at the gate along with daily temperature checks.
- Any vendor, performer, employee, volunteer, and guest who **exhibits symptoms** will be asked to **self-quarantine for 14 days** or **take a Covid-19 test** and provide leadership with **proof of a negative test** before being allowed back on the grounds.

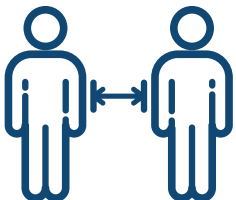
• **Any out-of-state vendor, performer, employee, volunteer and guest** could also be subjected to a brief conversation with qualified health professional and **may be required to submit proof of negative Covid-19 test** before leaving their home state and within one week of departure.

WEAR PROTECTIVE GEAR

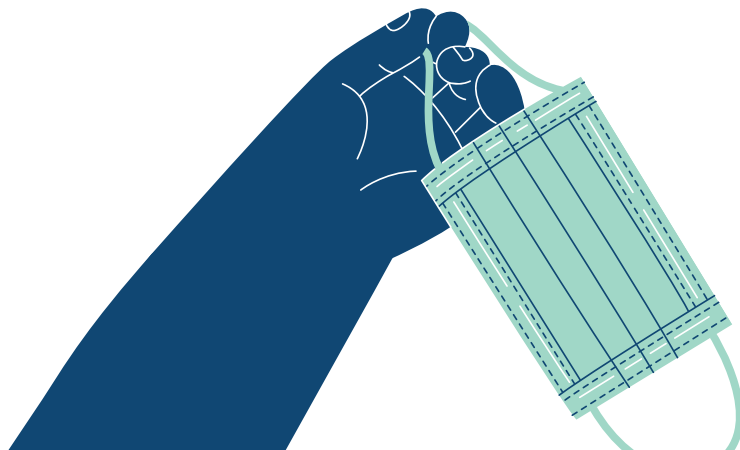


- All vendors, performers, employees, volunteers, and guests will be **required to wear a face covering**. Children under three will be exempt.
- **Staff will also be encouraged to wear gloves** when coming in close contact with vendors and their equipment.

PRACTICE SOCIAL DISTANCING



- **Touchless payments options are recommended.**
- **Seating will be restricted** allowing for the social distancing of 6 feet in between three household groups and less than 10 people.



○ USE SANITIZER



- **Tables and seats will be cleared and sanitized after each use.** Sanitizer stations and wipes will be made available in all dining areas.
- **Trash cans will be washed daily.**
- **Restrooms surfaces will be wiped down after each use.**
- Restrooms will be **cleaned nightly** with an FDA-approved disinfectant.
- **All contact points** throughout the facility will be **wiped down with disinfectant every 30 minutes.**

○ ADDITIONAL GUIDELINES FOR GUESTS



- Guests will need an **electronic ticket to enter the grounds.** Guest must **provide contact information** to secure a ticket.
- Guests will be asked to check a box **acknowledging the rules** prior to being allowed to make a purchase.
- Guests who refuse to follow our rules will be politely reminded of the policy and if necessary escorted off the grounds.
- **Signage will be prominently displayed** throughout the grounds and at all entry points **reminding guests of our policies.**

You can do your part by **wearing a mask** and practicing **social distancing.**

STAY AT HOME IF:

- You are experiencing any flu symptoms, such as headaches, shortness of breath, runny nose, sore throat, cough, or fever.
- You have a measured temperature greater than or equal to 100 degrees Fahrenheit (37.8 degrees Celsius).
- You've had known close contact with a person who is lab-confirmed to have COVID-19.



Where Tradition Meets Innovation